

Agricultural Management



Agroengineering



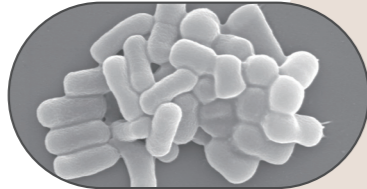
Food & Biomaterial Engineering



Plant Science



Microbiology



Animal Science and Human Biology



Earth Science



Geoenvironmental Science



Geography



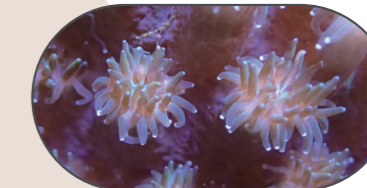
Mountain Science



Environmental Science, Engineering & Policy



Marine Biology



Hiroshi Matsumoto / Professor
Dean of the Faculty of Life and Environmental Sciences

Message from Dean

As a part of the RU11 (Research University 11) in Japan, our faculty is committed to excellence in promoting scientific research as well as fostering the next generation of scientists.

We also continue to foster global engagement and research through research collaboration and human and institutional capacity building activities with approximately 100 partners from more than 30 countries.

We look forward to starting valuable new research projects with you.

Faculty of Life and Environmental Sciences University of Tsukuba



- Shimoda Marine Research Center
- Sugadaira Research Station
- Yatsugatake Forest & Kawakami Forest Stations
- Ikawa Forest Station

Faculty of Life and Environmental Sciences University of Tsukuba

1-1-1 Tennodai, Tsukuba, Ibaraki 305-8572 JAPAN
Tel: +81-29-853-5622 / Fax: +81-29-853-6306
E-mail: seimei-pr@un.tsukuba.ac.jp
www.life.tsukuba.ac.jp/en/

